


Mermaid HAIR

BLOW DRY BRUSH



Got questions? Email us at hello@mermadehair.com
[@mermade.hair](https://www.mermadehair.com) [mermadehair.com](https://www.mermadehair.com) [#mermadehair](https://www.instagram.com/mermadehair)



**Thank you for purchasing a
Mermade. We hope you love it!**

We make tools & products that
change the **hair game**. We are a
team of hair enthusiasts inspiring a
new generation of **hairdressers,
stylists** & the **everyday human**.

Now, we're creating the next
game-changer hair tools &
products. We lead the pack. We
change the game. We create the
trends.

Get **10% off** your next order with
code **THANKYOU10**



Mermade
HAIR

Get to know your Mermade

Are you ready for the best hair of your life?

Flexible Bristles

Tangle free bristles make it easier to style and create bounce.

Temperature/ Power Control

Low: low heat, high speed 60C

Medium: medium heat, medium speed 95C

High: high heat, high speed 115C

Power On/Off

Wet or dry use

Use on wet hair for a blowout or revive dry hair.



Oval shape

The 60mm barrel creates curve and volume.

Ionic technology

Helps to seal your hair cuticle, create shine and curb flyaways.

Slim grip handle

It makes styling and twirling your mane almost effortless.

How to use the Blow Dry Brush

STEP ONE:

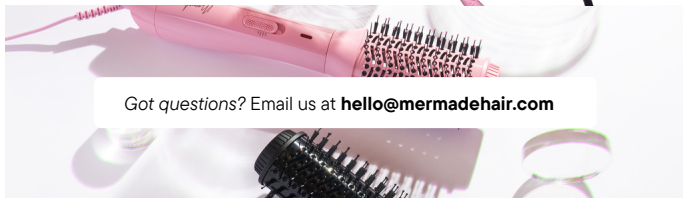
- The Mermade Blow Dry Brush is suitable for towel dried, damp or dry hair.
- Do not use on soaking wet hair. Hair must be 75% dry. Slide the button up to turn on and select the desired settings. The red light will indicate 'ON'.
 1. Low: low heat, high speed 60C
 2. Medium: medium heat, medium speed 95C
 3. High: high heat, high speed 115C

STEP TWO:

- Start by dividing hair into 2-inch sections with our Grip Clips. Apply heat protectant spray to each section.
- Brush slowly away from the head. Continue doing this to remove moisture and dry each section. Then, place the brush at your ends and roll the brush up the length of your hair until the barrel is at your roots, wrapping the hair around the brush in the process.
- Wrapping the hair around the barrel will give curve and bounce. Twist the hair as you unravel the brush. Repeat this process for all layers and sections of hair. For extra volume, apply the brush under each hair section & hold for a few seconds.

STEP THREE:

- Once you have finished drying your hair, slide the button down to 'OFF'. Allow the Blow Dry Brush to cool down completely before stowing away.



PRODUCT: Mermade Blow Dry Brush
MODEL NUMBER/S: MH1035 MH1036 MH1037
MH1038
WATTAGE/VOLTAGE:
EU/AU/IND/UK 220-240V, 1200W, 50-60Hz
USA/CAN 125V, 1000W
FREQUENCY: 50-60Hz
LINE LENGTH: 2.5M

AS WITH MOST ELECTRICAL MACHINES,
ELECTRICAL PARTS ARE ELECTRICALLY LIVE
EVEN WHEN THE SWITCH IS OFF. TO REDUCE
THE RISK OF BURNS, FIRE, ELECTRIC SHOCK
OR INJURY TO PERSONS:

1. Always unplug appliance immediately after using. An appliance should never be left unattended when it is plugged in.
2. Do not use while bathing or sleeping.
3. Do not place or store the machine where it can fall or be pulled into a tub or sink.
4. Do not place in or drop in water or any other liquid.
5. If the tool falls into water, unplug it immediately. Do not reach into the water.
6. Use this appliance only for its intended use as described in this manual. Do not use attachments not recommended by manufacturer.
7. Always place the appliance with the safety stand on a heat-resistant, stable flat surface.
8. Never operate this appliance if it has a damaged cord or plug, if it is not working properly, if it has been dropped or damaged, or if it has been dropped into water.
9. Keep cord away from the heated surfaces. Do not wrap the cord around the appliance.
10. Do not use an extension cord. This appliance is not intended for use by persons under the age of 12 years old, unless supervised by an adult.

ATTENTION

1. It is recommended this appliance should not be used by persons who have reduced physical, sensory or mental capabilities, or lack of experience and knowledge, unless they are supervised by a person responsible for their safety.

2. If the supply cord is damaged, it must be replaced by the manufacturer, its service agent or similarly qualified persons in order to avoid a hazard.
3. Do not use this appliance near bathtubs, showers, basins or other vessels containing water.
4. Keep appliance out of reach from young children, particularly during use and cool down.
5. Never leave appliance unattended when it is connected to a power supply. Always place the appliance with the safety stand on a heat-resistant, stable flat surface.
6. Do not use on synthetic hair.
7. For additional protection, the installation of a residual current device (RCD) having a rated residual operating current not exceeding 30mA is advisable in the electrical circuit supplying the bathroom. Ask your installer for advice.
8. Always do a strand test before using on your hair as heat can affect some hair colour, in particular on freshly coloured or toned hair

MAINTENANCE

1. To clean the unit, be sure the unit is cool and unplugged. Wipe the handle and barrel with a damp cloth. No other maintenance is necessary.
2. Do not attempt to repair the appliance yourself. This appliance has no user serviceable parts.
3. Unplug the unit whenever it is not in use. Allow it to cool, then store it out of reach of children in a safe, dry location.
4. Never wrap the cord around the appliance, since this will cause the cord to wear prematurely and break, thus voiding warranty. Handle the cord carefully and avoid jerking, twisting, or straining it, especially at plug connections.

SAFETY

1. Take extra care to ensure the brush does not contact skin or eyes.
2. Use a mirror when using the appliance to assist with safe usage.
3. Do not place tool on surfaces that are not heat resistant.



4. Polythene bags over the product and packaging may be dangerous. To avoid danger of suffocation, keep away from babies and children. These bags are not toys.

5. This appliance may not be treated as household waste. It should be handed to an appropriate collection point for the recycling of Electrical and Electronic equipment. By ensuring this product is disposed of correctly, you will help prevent potential negative consequences for the environment and human health, which could otherwise be caused by inappropriate waste handling of this product. For more detailed information about the recycling of this product, please contact your local council office or your household waste disposal service.

STRAND TEST BEFORE USE. ONLY USE ON DAMP/DRY HAIR. KEEP HAIR AWAY FROM THE BASE VENTED AREA. IF HAIR GETS STUCK INSIDE THE UNIT, DO NOT USE THE TOOL & CONTACT MERMADE HAIR.

LIMITED 2 YEAR GLOBAL WARRANTY

Mermade Hair warrants this product against any defects that are due to faulty material or workmanship for a two-year period from the original date of consumer purchase. This warranty does not include damage to the product resulting from accident or misuse. If the product should become defective within the warranty period, Mermade Hair will replace item. Email returns@merrmadehair.com for Warranty issues and provide the batch code found on the back of the tool.

This warranty does not cover products damaged by the following:

- Accident, misuse, abuse or alteration of the product
- Servicing by unauthorized persons
- Use with unauthorized accessories
- Connecting it to incorrect current and voltage
- Wrapping cord around appliance causing premature wear and breakage
- Any other conditions beyond our control

MERMADE HAIR SHALL NOT BE RESPONSIBLE FOR ANY INCIDENTAL, SPECIAL OR CONSEQUENTIAL DAMAGES RESULTING FROM THE USE OF THIS PRODUCT. ALL IMPLIED WARRANTIES, INCLUDING BUT NOT LIMITED TO IMPLIED WARRANTIES OF FITNESS AND MERCHANTABILITY, ARE LIMITED IN DURATION TO TWO YEARS FROM DATE OF ORIGINAL PURCHASE. KEEP ORIGINAL SALES RECEIPT AS PROOF OF PURCHASE FOR WARRANTY PURPOSES OR REGISTER YOUR WARRANTY ONLINE.

This warranty gives you specific legal rights and you may also have other rights which vary from state to state or province to province. Some states do not allow that exclusion or limitation of incidental, special, or consequential damages.

REGISTER YOUR WARRANTY AND REVIEW INSTRUCTIONS HERE: <https://qrco.de/bbSv60>



Mermade
HAIR

Manufacturer:

Mermade Hair Pty Ltd
1/649 Beaufort St,
Mt Lawley, WA, 6050
Questions or comments:
E: hello@merrmadehair.com
W: www.merrmadehair.com
Ph: (08) 6118 8408

A small, stylized signature logo of the letter 'M' in a cursive font.

Mermaid HAIR

Got questions? Email us at hello@mermadehair.com
[@mermade.hair](https://www.instagram.com/mermade.hair) [mermadehair.com](https://www.mermadehair.com) [#mermadehair](https://www.facebook.com/mermadehair)

