


Mermaid HAIR



PRO WAVER MANUAL



Thank you for purchasing a Mermade. We hope you love it!

We make tools & products that change the **hair game**. We are a team of hair enthusiasts inspiring a new generation of **hairdressers, stylists** & the **everyday human**.

Now, we're creating the next **game-changer** hair tools & products. We lead the pack. We change the game. We create the trends.

Get **10% off** your next order with code **THANKYOU10**



Mermade
HAIR



Get to know your Mermade

Are you ready for the best hair of your life?

Ionic

High-grade ionic ceramic barrels to protect your hair from unnecessary damage.

Multiple Sizes

Available in a range of sizes - small, medium, large & jumbo.

Crimp-free Design

Exclusive shape to create a soft s-wave.

Easy to use

Super easy to use - simply clamp down and release

Fast Heat Up

60 Second Heat Up

2 Year Warranty

Simply email hello@mermadehair.com for any Warranty issues.

Auto-shut Off

After 60 minutes

Temperature/ Power Control

Control your temperature with multiple settings.

Universal Voltage

Plug and play anywhere around the world



How to use the Waver

- **STEP ONE:** Hair should be clean, dry and free of tangles before using. Rest the iron on its stand on a smooth, heat-resistant flat surface, and plug it in. Press and hold the ON/OFF button until the unit turns on and the on indicator lights up. Adjust the temperature using the left and right buttons to reach your desired heat. For healthier styling we suggest using 180°C/360°F heat setting.
- **STEP TWO:** Start by dividing hair into sections. Smaller sections will create more defined waves. Spray each section liberally with a heat/thermal protectant. Taking one section at a time, start at the top close to the roots and clamp the hair, making sure that the hair is evenly placed inside the barrels. Be careful not to touch the scalp with the tool. Hold for 2-5 seconds. Hold for less time if hair is easy to curl, or if you want less defined waves. Once you have released your first clamp, re-clamp the top barrel of waver on to the last wave bend. You want to overlap each wave with your waver to create a seamless wave from roots to ends. Repeat this process through to the ends over the whole head.
- **STEP 3:** Once you have finished waving, make sure the hair has completely cooled down before touching to allow it time to set. For a beachy effortless wave, brush the waves out or comb through. Finish by using an extra spray of Mermade Mist for hold and shine.

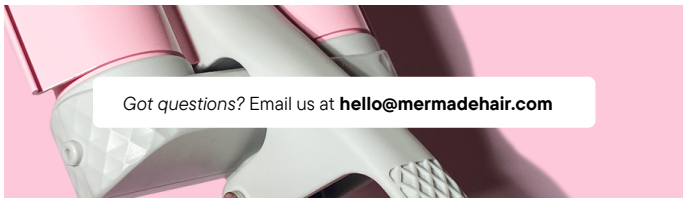
- **STEP FOUR:** To turn off, press and hold down the power off button until it reads 'OFF'. For your safety, the tool will auto shutoff after 60 minutes. Allow tool to cool down completely before stowing away. Make sure to wipe down the tool after use to avoid product build up on tool.

HOW TO HOLD THE WAVER: You can hold the Mermade Waver in two positions.

- **FLIPPED POSITION:** Your thumb is on the soft-touch handle and the safety stand is facing outward. Holding the waver in this flipped position will allow for easier self-styling as you can see the hair through the barrels so you can clamp each wave seamlessly. It also means the first wave goes downward creating a very natural look. It is also less likely to leave any crease mark in the hair.



- **UPRIGHT POSITION:** Your pointer finger is on the soft touch handle and the safety stand is facing inward. This way allows for easier styling if you are styling someone's hair or if you prefer the wave to move upward first.



Got questions? Email us at hello@mermadehair.com

PRODUCT: Mermade Pro Waver 22mm/25mm/32mm
MODEL NUMBER/S: MH5000 MH5001 MH5002 MH5003
MH5004 MH5005 MH5006 MH5007 MH5008 MH5009
MH5010 MH5011 MH5014 MH5019 MH5035 MH5020
MH5030 MH5021 MH5031 MH5032 MH5033

MATERIAL: Ceramic Tourmaline

HEATER: 3*PTC heater

MIN TEMP: 80°C/180°F

MAX TEMP: 210°C/ 410°F

VOLTAGE: Dual Voltage

LINE LENGTH: 2.5M



AS WITH MOST ELECTRICAL MACHINES, ELECTRICAL PARTS ARE ELECTRICALLY LIVE EVEN WHEN THE SWITCH IS OFF. TO REDUCE THE RISK OF BURNS, FIRE, ELECTRIC SHOCK OR INJURY TO PERSONS:

1. Always unplug appliance immediately after using. An appliance should never be left unattended when it is plugged in.
2. Do not use while bathing or sleeping.
3. Do not place or store the machine where it can fall or be pulled into a tub or sink.
4. Do not place in or drop in water or any other liquid.
5. If the tool falls into water, unplug it immediately. Do not reach into the water.
6. Use this appliance only for its intended use as described in this manual. Do not use attachments not recommended by manufacturer.
7. Always place the appliance with the safety stand on a heat-resistant, stable flat surface.
8. Never operate this appliance if it has a damaged cord or plug, if it is not working properly, if it has been dropped or damaged, or if it has been dropped into water.
9. Keep cord away from the heated surfaces. Do not wrap the cord around the appliance.
10. Do not use an extension cord. This appliance is not intended for use by persons under the age of 12 years old, unless supervised by an adult.

ATTENTION

1. It is recommended this appliance should not be used by persons who have reduced physical, sensory or mental capabilities, or lack of experience and knowledge, unless they are supervised by a person responsible for their safety.
2. If the supply cord is damaged, it must be replaced by the manufacturer, its service agent or similarly qualified persons in order to avoid a hazard.
3. Do not use this appliance near bathtubs, showers, basins or other vessels containing water.
4. Keep appliance out of reach from young children, particularly during use and cool down.
5. Never leave appliance unattended when it is connected to a power supply. Always place the appliance with the safety stand on a heat-resistant, stable flat surface.

6. Do not use on wet, damp or synthetic hair.
7. For additional protection, the installation of a residual current device (RCD) having a rated residual operating current not exceeding 30mA is advisable in the electrical circuit supplying the bathroom. Ask your installer for advice.
8. Always do a strand test before using on your hair as heat can affect some hair colour, in particular on freshly coloured or toned hair

MAINTENANCE

1. To clean the unit, be sure the unit is cool and unplugged. Wipe the handle and barrels with a damp cloth. No other maintenance is necessary.
2. Do not attempt to repair the appliance yourself. This appliance has no user serviceable parts.
3. Unplug the unit whenever it is not in use. Allow it to cool, then store it out of reach of children in a safe, dry location.
4. Never wrap the cord around the appliance, since this will cause the cord to wear prematurely and break, thus voiding warranty. Handle the cord carefully and avoid jerking, twisting, or straining it, especially at plug connections.

SAFETY

1. Take extra care to ensure the hot plates do not contact skin or eyes.
2. Use a mirror when using the appliance to assist with safe usage.
3. Do not place tool on surfaces that are not heat resistant.
4. Polythene bags over the product and packaging may be dangerous. To avoid danger of suffocation, keep away from babies and children. These bags are not toys.
5. This appliance may not be treated as household waste. It should be handed to an appropriate collection point for the recycling of Electrical and Electronic equipment. By ensuring this product is disposed of correctly, you will help prevent potential negative consequences for the environment and human health, which could otherwise be caused by inappropriate waste handling of this product. For more detailed information about the recycling of this product, please contact your local council office or your household waste disposal service.

THE SAFETY STAND MUST BE USED AT ALL TIMES ON HEAT RESISTANT SURFACES. STRAND TEST BEFORE USE.

LIMITED 2 YEAR GLOBAL WARRANTY

Mermade Hair warrants this product against any defects that are due to faulty material or workmanship for a two-year period from the original date of consumer purchase. This warranty does not include damage to the product resulting from accident or misuse.

If the product should become defective within the warranty period, Mermade Hair will replace item. Email hello@mermadehair.com for Warranty issues and provide the batch code found on the power cord. This warranty does not cover products damaged by the following:

- Accident, misuse, abuse or alteration of the product
- Servicing by unauthorized persons
- Use with unauthorized accessories
- Connecting it to incorrect current and voltage
- Wrapping cord around appliance causing premature wear & breakage
- Any other conditions beyond our control

MERMADE HAIR SHALL NOT BE RESPONSIBLE FOR ANY INCIDENTAL, SPECIAL OR CONSEQUENTIAL DAMAGES RESULTING FROM THE USE OF THIS PRODUCT. ALL IMPLIED WARRANTIES, INCLUDING BUT NOT LIMITED TO IMPLIED WARRANTIES OF FITNESS AND MERCHANTABILITY, ARE LIMITED IN DURATION TO TWO YEARS FROM DATE OF ORIGINAL PURCHASE. KEEP ORIGINAL SALES RECEIPT AS PROOF OF PURCHASE FOR WARRANTY PURPOSES OR REGISTER YOUR WARRANTY ONLINE.

This warranty gives you specific legal rights and you may also have other rights which vary from state to state or province to province. Some states do not allow that exclusion or limitation of incidental, special, or consequential damages.

REGISTER YOUR WARRANTY AND REVIEW

INSTRUCTIONS HERE: <https://qrco.de/bbSv60>



Manufacturer:

Mermade Hair Pty Ltd
1/649 Beaufort St,
Mt Lawley, WA, 6050

Questions or comments:

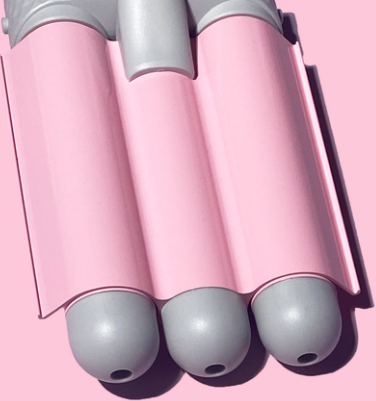
E: hello@mermadehair.com

W: www.mermadehair.com

Ph: (08) 6118 8408

Mermade
HAIR

M



Mermade
HAIR

Got questions? Email us at hello@mermadehair.com
[@mermade.hair](https://www.instagram.com/mermade.hair) [mermadehair.com](https://www.mermadehair.com) [#mermadehair](https://www.tiktok.com/@mermadehair)

